

Nandakā

STATELY APARTMENTS AND PENTHOUSES



FOR ELATED LIVING

Architectural Plans and Layouts

The world resides at Nandaka 84.



Welcome to a global community built around the six elations of life: ullaasaa, prasanna, harsha, aananda, utsava and tripta. Here, international sophistication meets pure living to offer homes for elated living.

Home is where purity meets global excellence.

To create this quintessential global address, we have partnered with internationally acclaimed design and development houses.



Architecture Partner



One of the world's most revered architecture house, UHA is known for their novel designs that break monotony of urban skylines. They have partnered with us to bring sophistication into this project, adding global ingenuity to the idea, life is pure.

Sustainability Partner



As the founding members of the IGBC, we strive for responsible development. This isn't just about the surface measures towards environmental conservation, but advance innovation in planning, design and operations to minimise carbon footprint.

Club & Design Partner



Landscaping Partner



Facade Partner



Knowledge Partner

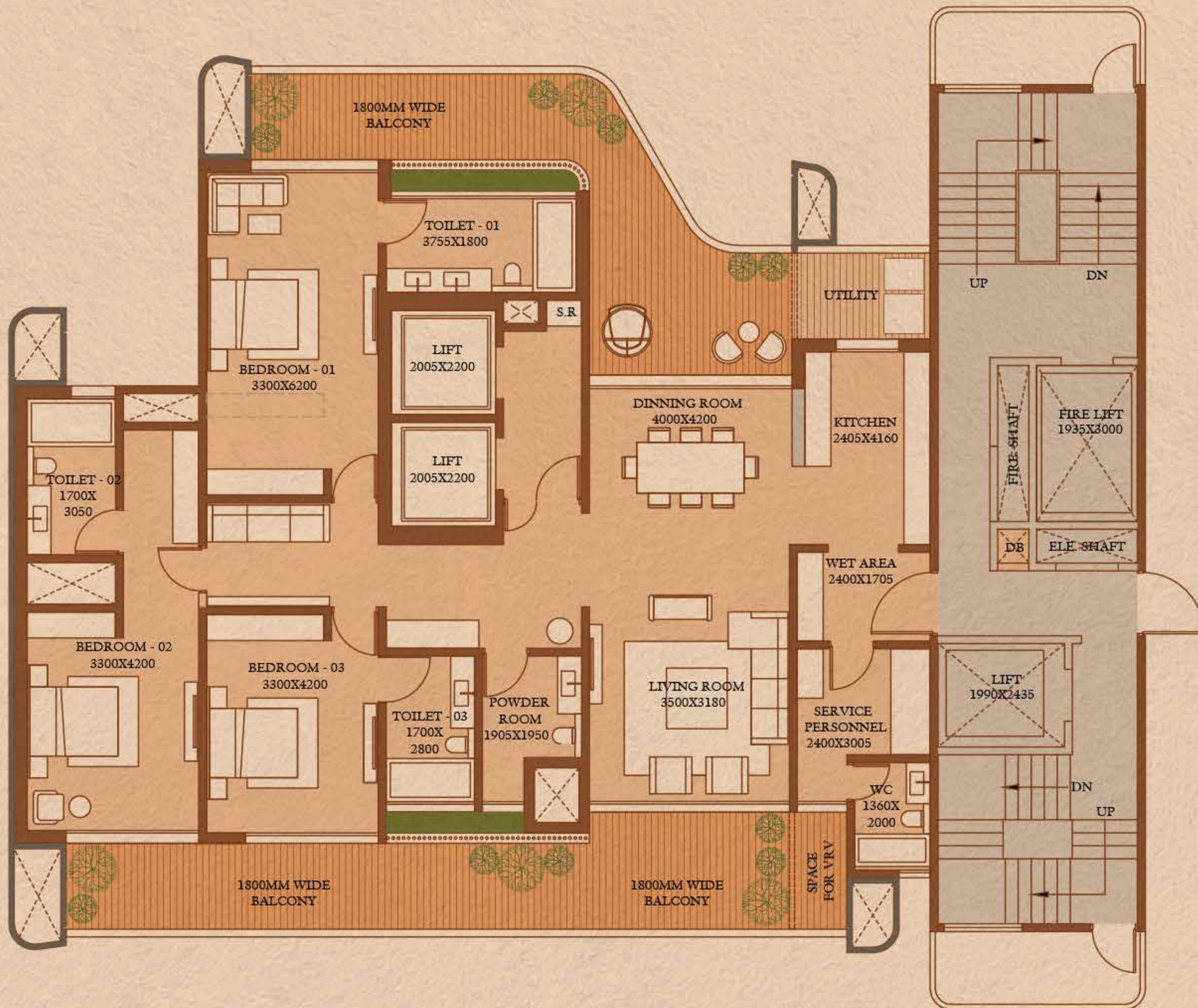


We have a few plans to make your life happier.



We understand that your needs are just as unique
as your ways of elation. That is why, Nandaka 84 offers multiple
spacious layouts, planned to welcome and nurture joy.

3 BHK UNIT 3A



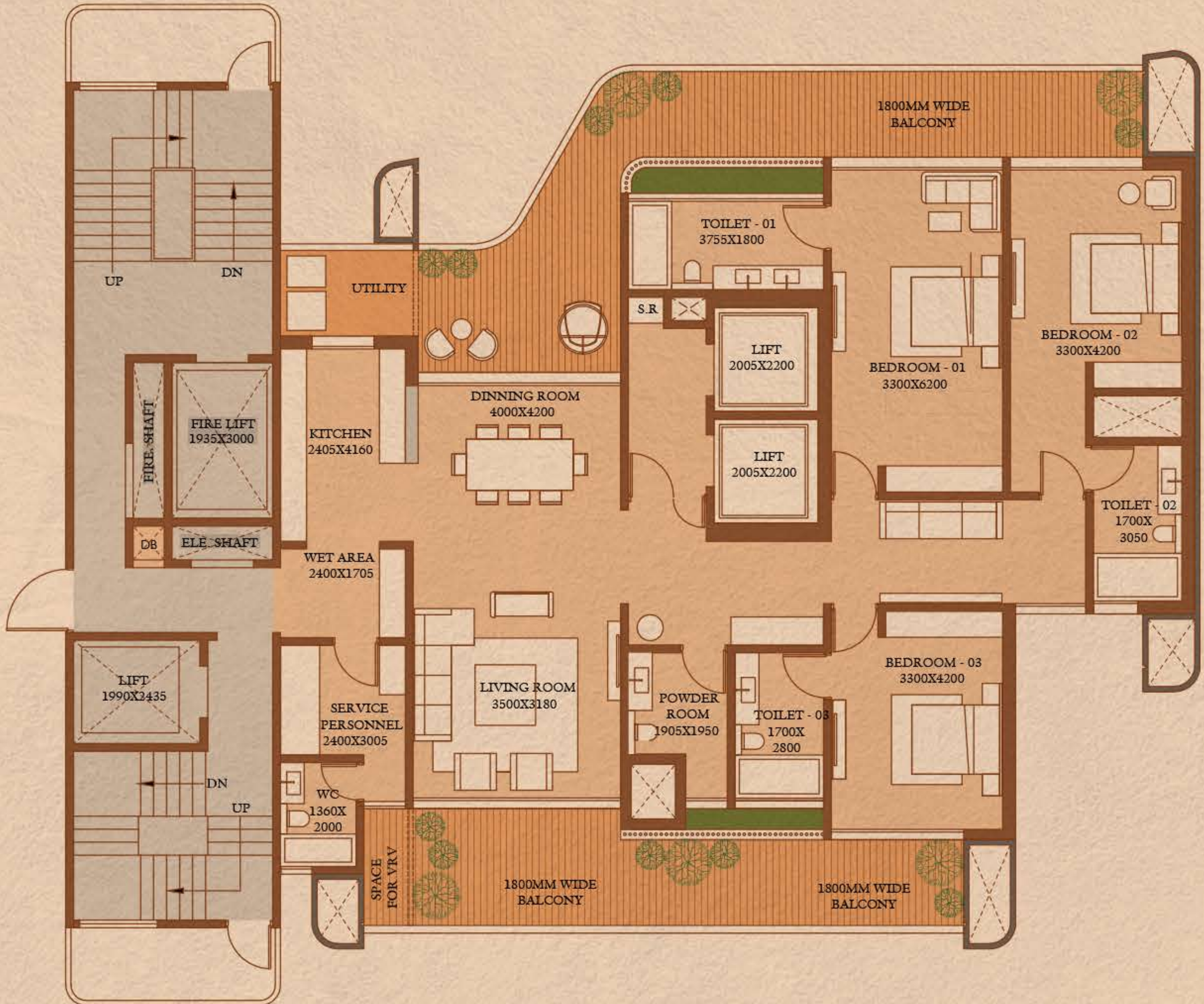
Covered area
2086.60 sq. ft

Balcony area
572.209 sq. ft

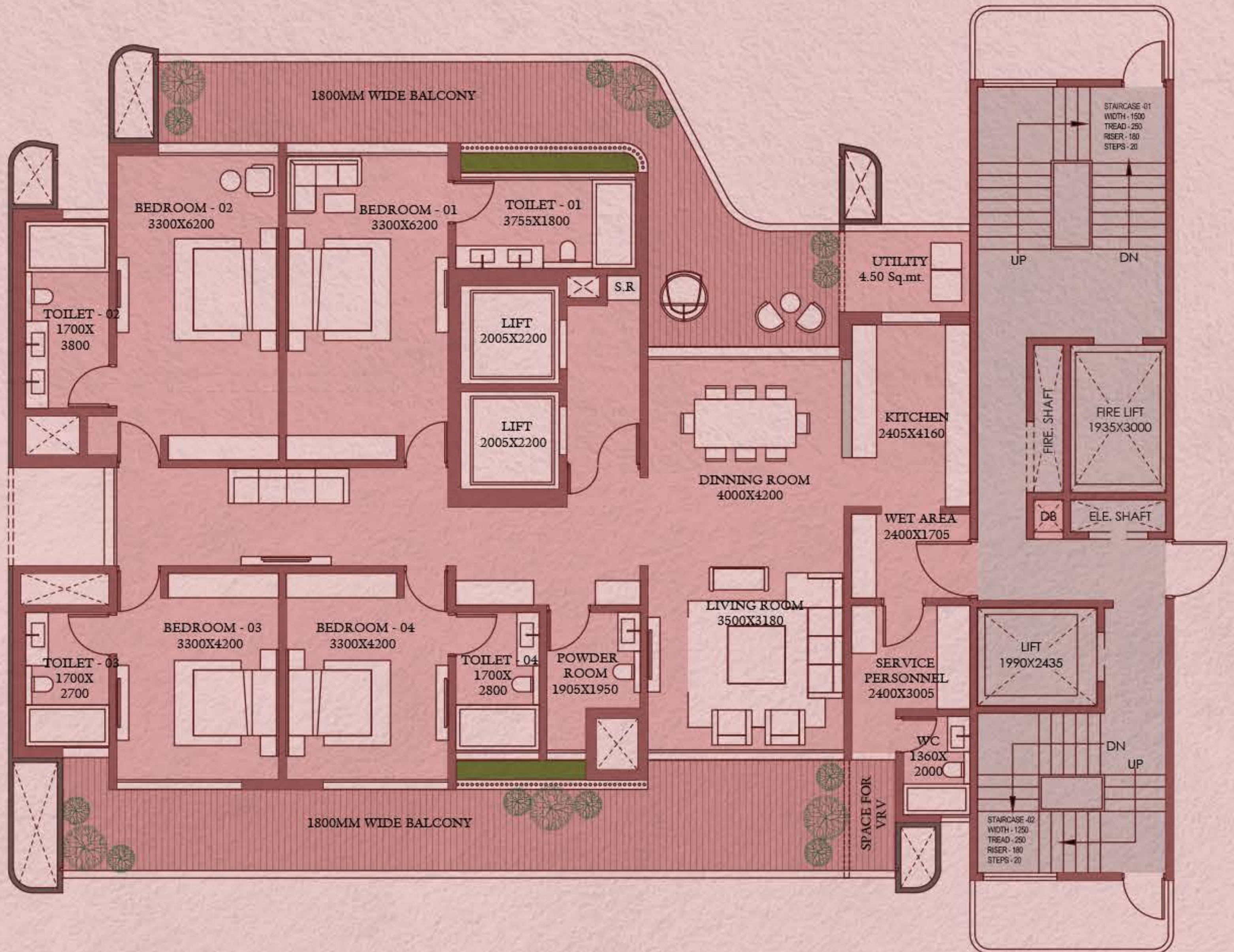
Carpet area
1722.209 sq. ft

Super builtup area
3050.71 sq. ft

3 BHK
UNIT 3B



4 BHK UNIT 4A



Covered area
2481.86 sq. ft

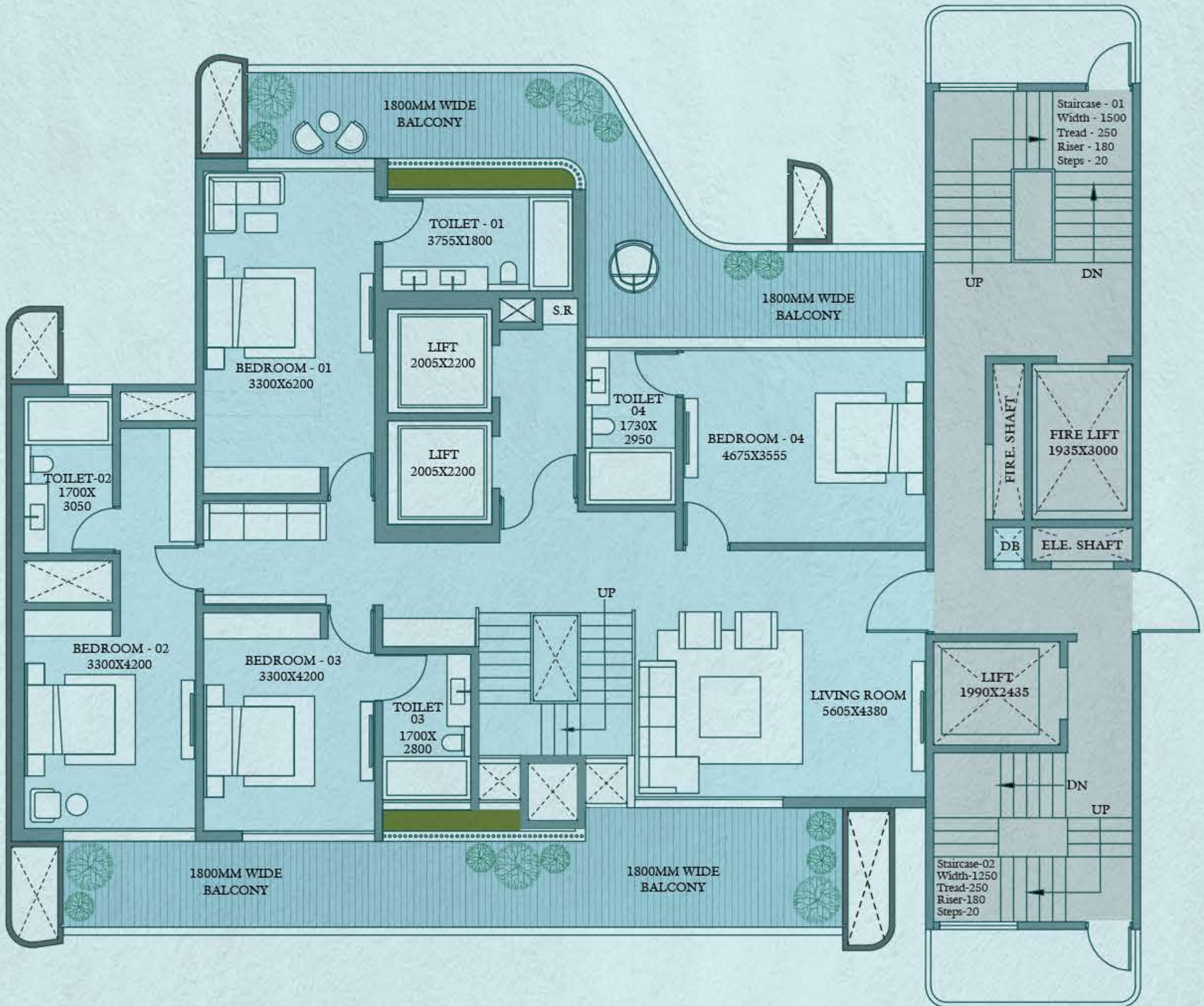
Balcony area
684.79 sq. ft

Carpet area
2117.60 sq. ft

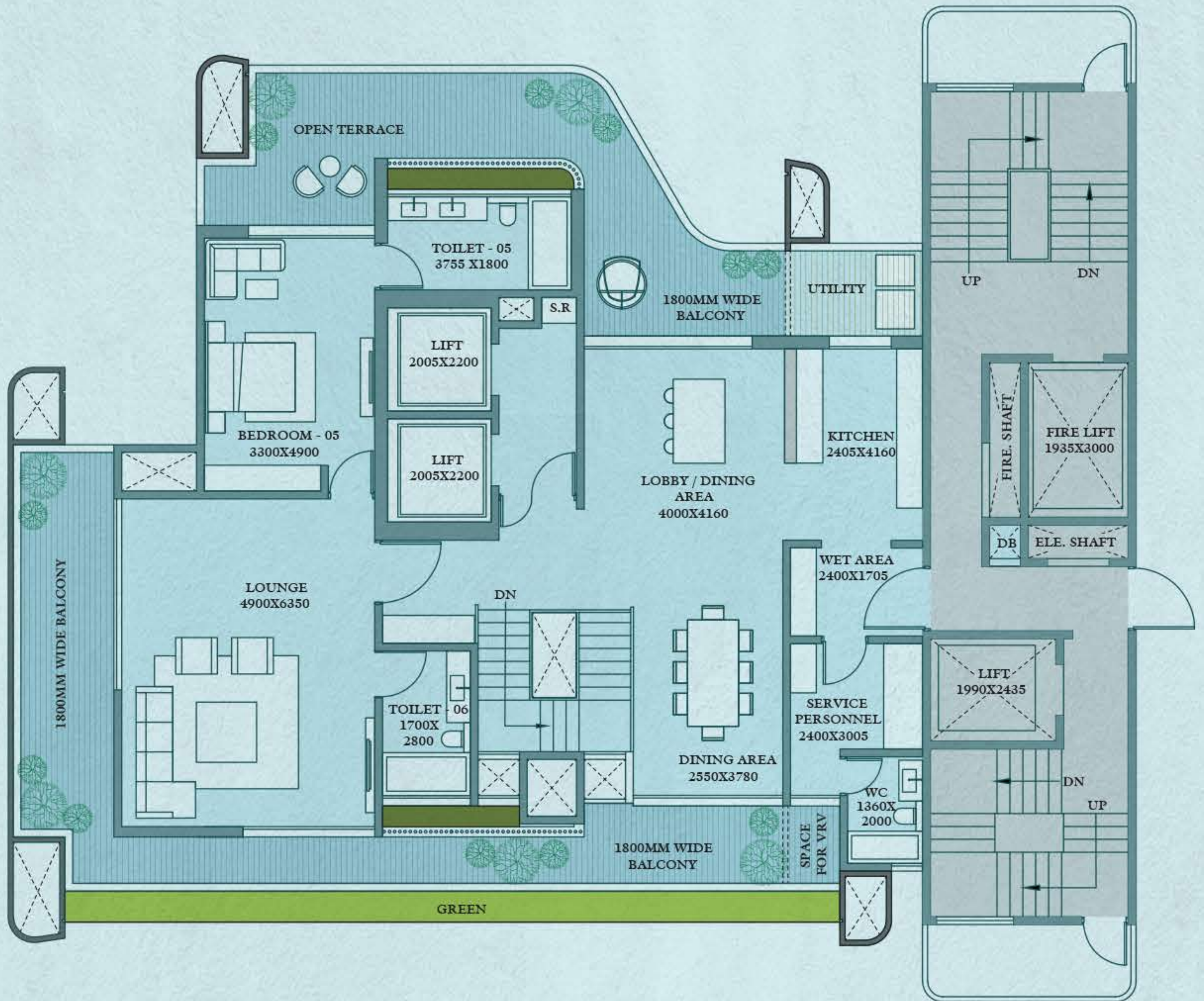
Super builtup area
3850.18 sq. ft

PENTHOUSE

UNIT 5A (LOWER)



PENTHOUSE UNIT 5A (UPPER)



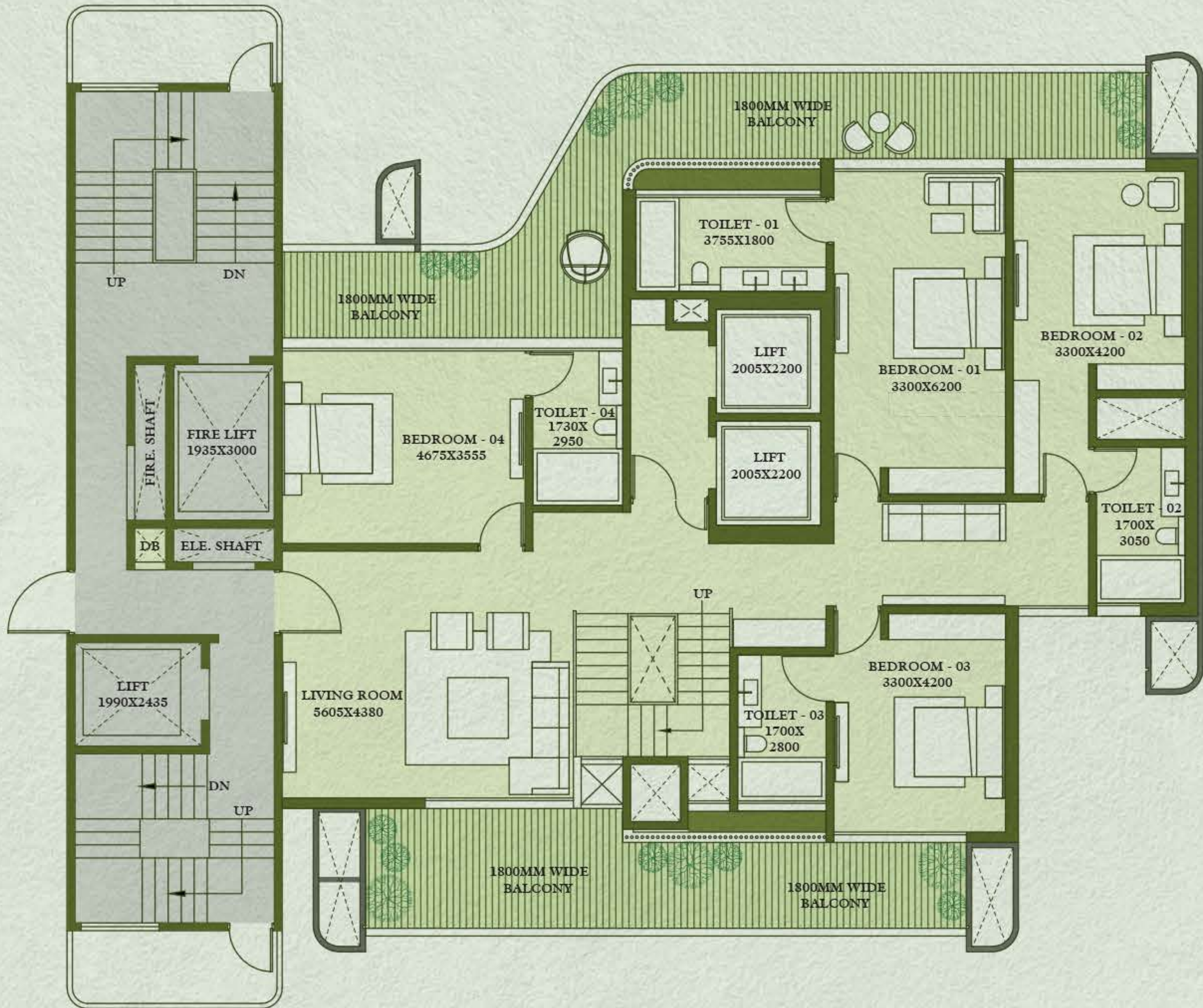
Covered area
2086.60 sq. ft

Balcony area
1352.856 sq. ft

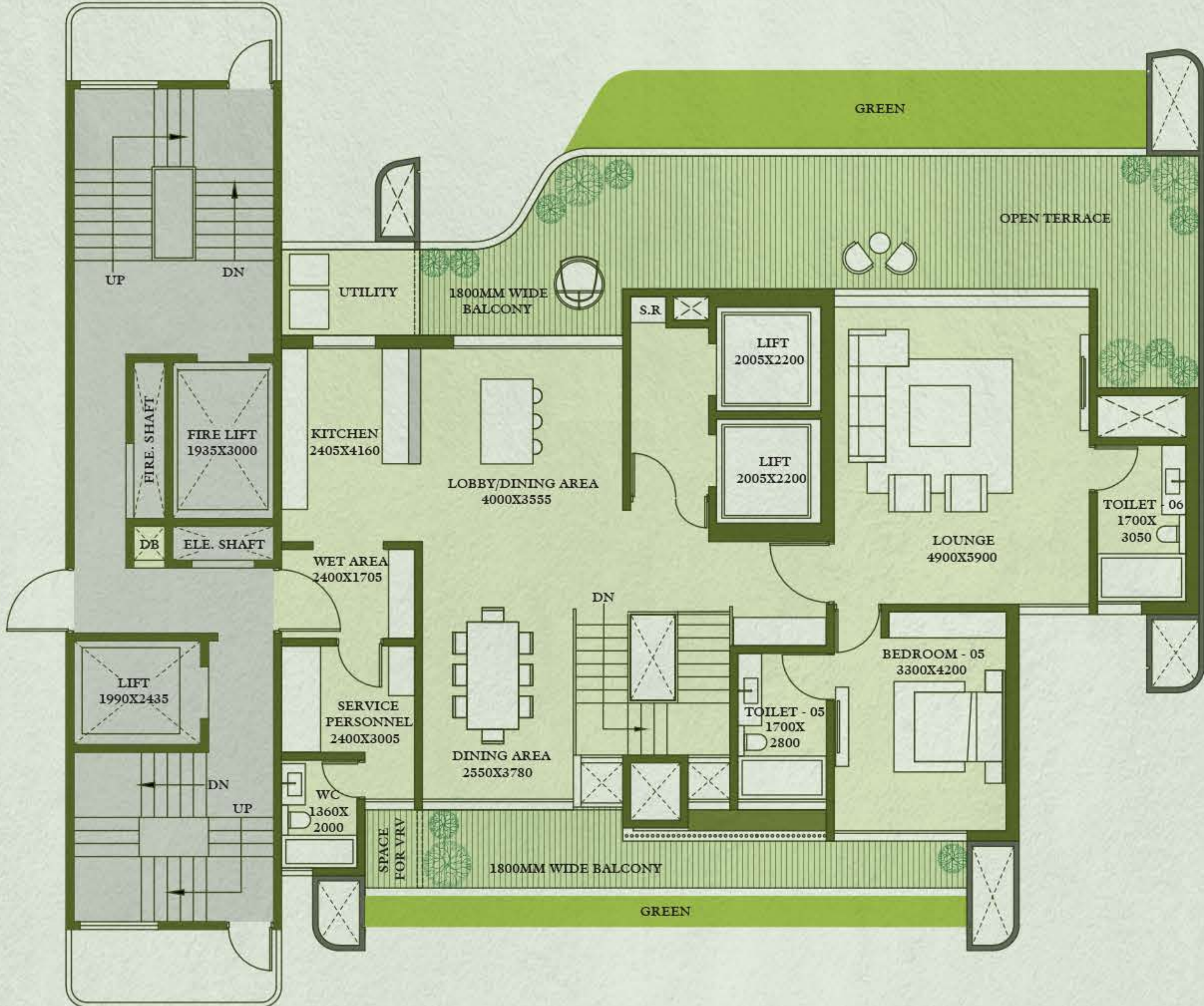
Carpet area
3097.987 sq. ft

Super builtup area
5632.703 sq. ft

PENTHOUSE UNIT 5B (LOWER)



PENTHOUSE UNIT 5B (UPPER)



Covered area
2086.60 sq. ft

Balcony area
1352.856 sq. ft

Carpet area
3097.987 sq. ft

Super builtup area
5632.703 sq. ft













Artistic Impression



Artistic Impression



Artistic Impression



Artistic Impression

Features

Socio-club
Infinity Pool (+ Snorkeling Pool)
Floating Cabana
Bar
Outdoor Grills with Open-air Dining
Mini Theatre
Senior Citizens' Deck
Yoga Room
Meditation Room
Childrens' Gym
Kids' Mania
Spa
Salon
Suntanning Salon
Virtual Golf Simulator
Gaming Zone
Cigar Room
Library
Tuck Shop
Community Lounge with Coffee Station
Multi-purpose Hall
Natural Air Cleaners

Residences
Centralised Mail Desk
Concierge Services + Valet Parking
Natural Air Cleaners (Salt Lamps & Beeswax Candles)
Business Lounge with Desktop Stations
Prayer Room
Medical Room
Library (Kids/Adults)
Kids' Laboratory
Observatory Deck
Moon Deck (Candle-light Dinner)
Entrance Water Feature
Car Washing
Co-working Spaces
Triple-height Lobby
Lift (Dumbwaiter)
Open-terrace Gym

Commons
Miyawaki Garden
Medicinal Garden Plants
Air Purifying Flora
Plantation combating pollution
Herb Garden
Panchtatva Pathway
Birds Zone (Sanctuary)
Pet Grooming Centre
Pet Corner
Kids' Mania
Pottery Barn
Artists' Corner
Doctors on Call
Chef on Call
House Help on Call
Smart Visitor Monitoring System (24x7)
Open-air Theatre
Meditation Zone
Jogging Track
Skating Rink
Suntan Deck
EV Charging Stations
Fragrance Garden
Colorful Parks
Reflexology Court
Secured Bicycle Storage with Tune-Up Station
Designated Rideshare Pick-up Areas
Laundromats

Sports Club
Squash Court
Tennis Court
Half Basketball Court
Volleyball Court
Cricket Practice Net
Jiu-jitsu Court
Hockey Turf
Open Gym

Smiles are waiting for you.



Now that you have experienced the Nandaka wāy of life,
we invite you to take your place amidst this global community
and begin the elated life with your family.



Artistic Impression

Details for bookings

GGHPL Nandaka Collection A/c
Bank Name: ICICI Bank Ltd
A/c No. 739005000512
IFSC Code : ICIC0007390

Branch Add: Ground Floor,
World Trade Tower, C-1 Sector 16,
Noida, UP - 201301

GANGA
REALTY

Life is pure™

Ground Floor, Vatika Tower, Sector 54, Gurugram

AN ISO 45001:2018 ; 9001:2015 ; 14001:2015 CERTIFIED COMPANY



RC/REP/HARERA/GGM/752/484/2023/96 | Dated - 23.10.2023

Disclaimer: The Real Estate (Regulation and Development) Act 2016 and the rules made thereunder have brought significant changes to the real estate sector. The Promoter/Developer is fully committed to be compliant with the provisions laid down under RERA. Promoter/Developer urges every applicant to inspect the site where the project is proposed to be constructed and not merely rely upon or be influenced by any architectural impression, plan or sales brochure and therefore requests to make personal judgement prior to submitting an application for booking. The images shown here are indicative of design and for illustration purpose only. Further, the actual design may vary in fit and finish from the one displayed above. Project details/specifications can also be accessed at the office of Haryana Real Estate Regulatory Authority website <http://hrera.in>. T&C apply. 1 sq. mt = 10.7639 sq. ft.

GANGA
REALTY

Life is pure.™